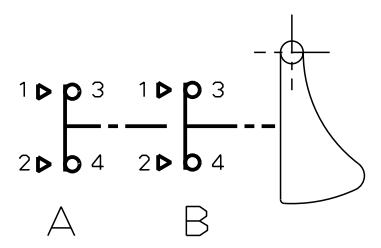


Schema. Diagram



*** Caract. GENERALES**

- Temperature d'emploi
- Temperature de stockage
- Protection face avant
(MIL STD 810D/506-2/proced.II)
- Rigidite dielectrique
- Resistance d'Isolment
- Masse
- Matiere

*** Caract. MECANIKES**

- Couple de Commande FC
1er Circuit
2me Circuit
- Couple de relachement
- Course d'Approche
1er Circuit -> CA1
2em Circuit -> CA2
- Course Totale
- Couple de pivotement palette
- Vibrations Norme AIR 7306 Titre 3
Sinusoidales Fasci. 41 tabl. 2
Aleatoires Fasci. 42 Figure 17
- Endurance Mecanique

*** Caract. ELECTRIQUES**

- Tension d'Alimentation
- Pouvoir de Coupure
En circuit resistif
- Endurance Electrique

*** GENERAL Caract.**

- Ambient Temperature range: -35° ↔ +75°C
- Storage Temperature range: -55° ↔ +85°C
- Front face drip.proof: Goutte a goutte / Drip
- Dielectric withstanding voltage: 500V
- Insulation resistance: >10MΩ sous 500Vcc
- Mass: 25±2g
- Material: Thermoplastique Inox / Thermoplast Stainless steel

*** MECANICAL Caract.**

- Operate Torque FC: -
- 1st Circuit: 0.3 N.m Max
- 2nd Circuit: 0.5 N.m Max
- Release Torque: 0.06 N.m Min
- Pre Travel: -
- 1st Circuit -> CA1: 12° Max
- 2nd Circuit -> CA2: 20° Max
- Total Travel: 22° min
- Flap rotate torque: 0.015 N.m Min
- Vibrations Air 7306 titre 3: -
- Sinusoidal Part 41 Table 2: -
- Random Part 42 scheme 17: -
- Mechanical Endurance: 100 000 Cycles

*** ELECTRICAL Caract.**

- Nominal Voltage: 5 VDC ↔ 32 VDC
- Electrical Rating: -
- Resistive circuit: 1 ↔ 20 mA
- Electrical Endurance: 50 000 Cycles

83574555
Product:

A	CREATION DE L'OBJET	Modified by	M.VERDIER	26/03/2010
		Verified by	T_VINARD	26/03/2010
		Authorized by		
Toler. gene. lin ± 0.1 mm		This document is the property of Crouzet-Automatismes. It's contents cannot be reproduced or divulged without the company's written approval. The product data and specifications found on this document do not constitute any contractual obligation. Crouzet-Automatismes and its subsidiaries reserve the right to modify the specifications. All rights of reproduction, modification, reprinting, and translation reserved for all countries.		
Toler. gene. Ang ± 1 degrees				
General Raw surface Ra ✓		Scale 1/1		
2, rue du Dr ABEL BP 59, 26902, Valence CEDEX 9 France		Customer Ref.:		PFT001:0<C>;0<M>
Customer:		GACHETTE ETANCHE 2P ROUGE BN		Dispatching DI
Designation/FR:		TWO POSITIONS TRIGGER MOMENTARY ACTION		
Designation/GB:		DATA SHEET		Index
Department: CT		Design by M.VERDIER 26/03/2010		Format
Verif. by T_VINARD 26/03/2010		FT83574555FR		Folio
NATO code: FAOX2				Authorized by
				1/1