

PRESENTATION

APPAREIL NON ETANCHE
 PLATINE ET BOITIER EN POLYAMIDE 6-6 CHARGE F.V.
 POUSSOIR EN RESINE ACETALE ROUGE
 COSSES A SOUDER
 CONTACTS EN ARGENT

CARACTERISTIQUES MECANIKUES

FORCE DE COMMANDE :
 CIRCUITS 1 ET 2 12N MAXI.SUR R 15
 FORCE DE COMMANDE :
 CIRCUITS 3 ET 4 30N MAXI.SUR R 15
 FORCE DE RELACHEMENT : 2N MIN. SUR R 15
 COURSE D'APPROCHE CIRCUITS 1 ET 2 :12°MAXI.(CA1)
 COURSE D'APPROCHE CIRCUITS 3 ET 4 :21°MAXI.(CA2)
 COURSE TOTALE : 22° MIN. (CT)
 ENDURANCE MECANIQUE : 100 000 CYCLES

CARACTERISTIQUES ELECTRIQUES

TENSION : 32VCC
 CIRCUIT RESISTANT : 2A
 ENDURANCE ELECTRIQUE : 100 000 CYCLES

CARACTERISTIQUES GENERALES
 TEMPERATURE D'EMPLOI : -15°C A +60°C
 TEMPERATURE DE STOCKAGE : -55°C A +85°C
 MASSE : 0.0378Kg ±5%

PRESENTATION

NON-PROOF TRIGGER
 PLATE AND CASING : POLYAMIDE 6.6 REINFORCED FIBERGLASS
 BUTTON : RED ACETATE RESIN
 SOLDER TERMINAL
 SILVER CONTACTS

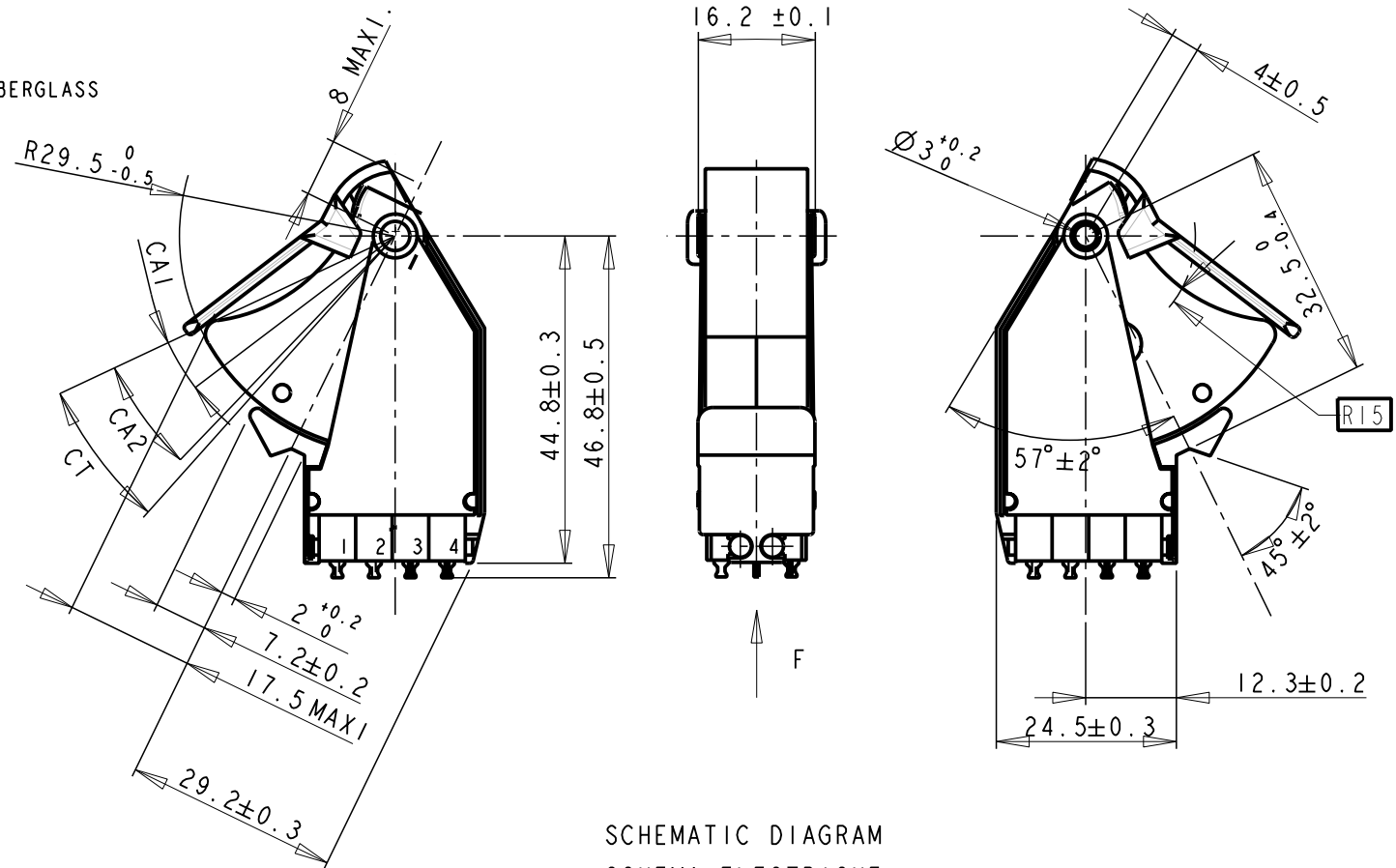
MECHANICAL CHARACTERISTICS

OPERATING FORCE :
 CIRCUITS 1 AND 2 12N MAXI.ON R 15
 OPERATING FORCE :
 CIRCUITS 3 AND 4 30N MAXI.ON R 15
 RELEASE FORCE : .2N MIN. ON R 15
 PRE TRAVEL CIRCUIT 1 AND 2 :12°MAXI.(CA1)
 PRE TRAVEL CIRCUIT 3 AND 4 :21°MAXI.(CA2)
 TOTAL TRAVEL : 22° MIN. (CT)
 MECHANICAL ENDURANCE : 100 000 CYCLES

ELECTRICAL CHARACTERISTICS

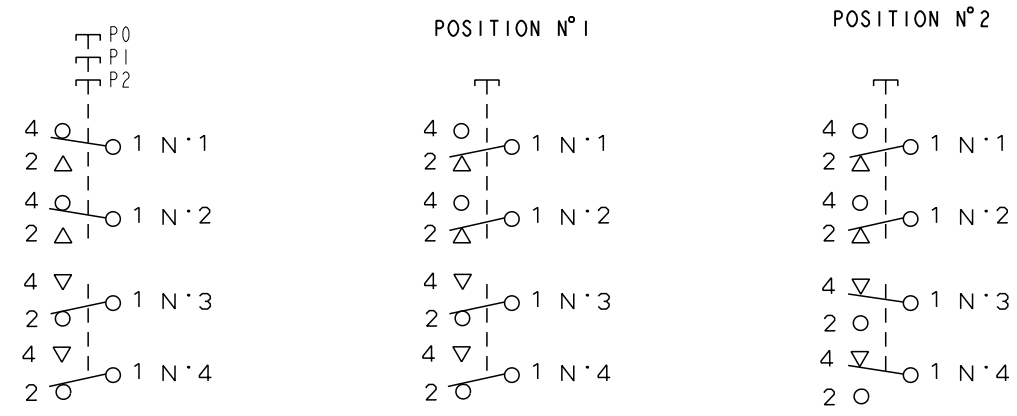
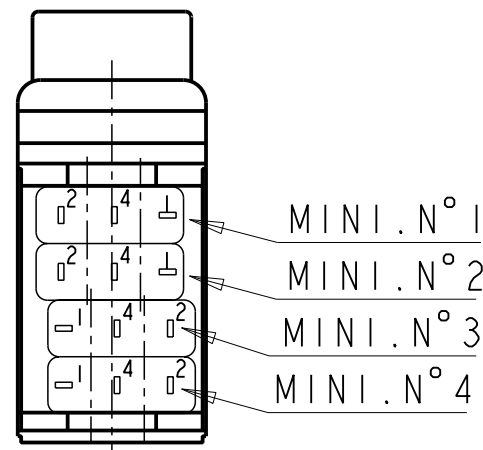
VOLTAGE :32VDC
 RESISTANT CIRCUIT : 2A
 ELECTRICAL ENDURANCE : 100 000 CYCLES

GENERAL CHARACTERISTICS
 OPERATING TEMPERATURE : -15°C TO +60°C
 STORAGE TEMPERATURE : -55°C TO +85°C



SCHEMATIC DIAGRAM
 SCHEMA ELECTRIQUE

VUE SUIVANT F
 VUE DE DESSOUS
 REPERE DES BORNES
 (NON MARQUE SUR LE PRODUIT)



Reference	83574512	
Modified by	D.DELIAUD	29/10/2012
Verified by	V.CAILLET	29/10/2012
Authorized by		

B	NDL.C.T.DEF.00985.FR		
	16±0.1->16.2±0.1		
Toler. gene. Lin ± mm		This document is the property of Crouzet-Automatismes. It's contents cannot be reproduced or divulged without the company's written approval. The product data and specifications found on this document do not constitute any contractual obligation. Crouzet-Automatismes and its subsidiaries reserve the right to modify the specifications. All rights of reproduction, modification, reprinting, and translation reserved for all countries.	
Toler. gene. Ang ± degrees			
General Raw surface Ra ✓		Scale 1/1	
2, rue du Dr ABEL BP 59, 26902, Valence CEDEX 9 France		Customer Ref.:	
Designation/FR: GACHETTE BIPOLAIRE A 2 P. MOMENTANEEES Designation/GB: TWO POLES TRIGGER 2 P. MOMENTARY		PFT001:<C>;<M>	
Department: CT		Dispatching 01	
Design by D.DELIAUD 29/10/2012 Verif. by V.CAILLET 29/10/2012		Index Format Folio	
NATO code: FA0X2		FT83574512FR	
Authorized by		B A3 1/1	