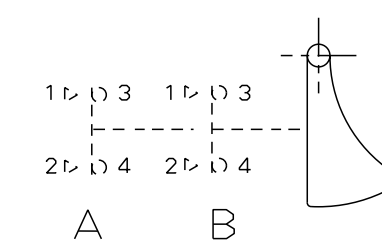


Schema. Diagram



*** Caract. GENERALES**

- Temperature d'emploi
- Temperature de stockage
- Protection face avant
(MIL STD 810D/506-2/proced.II)
- Rigidite dielectrique
- Resistance d'Isollement
- Masse
- Matiere

*** Caract. MECANQUES**

- Couple de Commande FC
- Couple de relachement
- Course d'Approche CA
- Course Totale
- Couple de pivotement palette
- Vibrations Norme AIR 7306 Titre 3
Sinusoidales Fasci. 41 tabl. 2
Aleatoires Fasci. 42 Figure 17
- Endurance Mecanique

*** Caract. ELECTRIQUES**

- Tension d'Alimentation
- Pouvoir de Coupure
En circuit resistif
En circuit selfique
- Endurance Electrique

*** GENERAL Caract.**

- Ambient Temperature range -35° ↔ +75°C
- Storage Temperature range -55° ↔ +85°C
- Front face drip.proof
(MIL STD 810D/506-2/proced.II)
- Dielectric withstanding voltage Goutte a goutte 500V
- Insulation resistance >10MΩ sous 500Vcc
- Mass 27±2g
- Material Thermoplastique Inox
Thermoplast Stainless steel

*** MECANICAL Caract.**

- Operate Torque FC 0.34 N.m Max
- Release Torque 0.06 N.m Min
- Pre Travel CA 12° Max
- Total Travel 14° min
- Flap rotate torque 0.015 N.m Min
- Vibrations Air 7306 titre 3 -
- Sinusoidal Part 41 Table 2 -
- Random Part 42 scheme 17 -
- Mechanical Endurance 100 000 Cycles

*** ELECTRICAL Caract.**

- Nominal Voltage 30VDC ou 115VAC 400Hz
- Electrical Rating -
- Resistive circuit 6A
- Inductive circuit L/R=5ms 3A
- Electrical Endurance 50 000 Cycles

83574503

Product:

C	CTP9489 : CORRECTION TEMPERATURE D'UTILISATION		Modified by	F_MONCHAL	26/04/2011
			Verified by	L_JULLY	26/04/2011
			Authorized by		
Toler. gene. Lin ± 0.1 mm		<p>This document is the property of Crouzet-Automatismes. It's contents cannot be reproduced or divulged without the company's written approval. The product data and specifications found on this document do not constitute any contractual obligation. Crouzet-Automatismes and its subsidiaries reserve the right to modify the specifications. All rights of reproduction, modification, reprinting, and translation reserved for all countries</p>			
Toler. gene. Ang ± 1 degrees					
		General Raw surface R_a ✓		Scale 1/1	
2, rue du Dr ABEL BP 59, 26902, Valence CEDEX 9 France		Customer: Designation/FR: GACHETTE ETANCHE 1 POSITION BIPOLAIRE AVEC PALETTE DE PROTECTION Designation/GB: TWO POLES ONE POSITION TRIGGER MOMENTARY ACTION WITH FLAP		Customer Ref.: PFT001:<C>;<M>	
Department: CT		Design by M_DOREY 19/07/1996 Verif. by .C_MARTIN 19/07/1996		FICHE TECHNIQUE - DATA SHEET FT83574503FR	
NATO code: FA0X2		Authorized by		Index C	Format A3
				Folio 1/1	