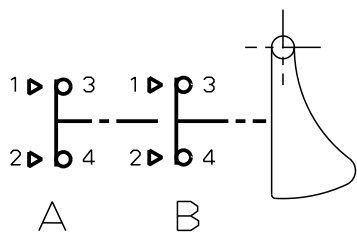


Schema. Diagram



*** Caract. GENERALES**

- Temperature d'emploi
- Temperature de stockage
- Protection face avant
(MIL STD 810D/506-2/proced.II)
- Rigidite dielectrique
- Resistance d'Isolment
- Masse
- Matiere

*** Caract. MECANIKES**

- Couple de Commande FC
1er Circuit
2me Circuit
- Couple de relachement
- Course d'Approche
1er Circuit -> CA1
2em Circuit -> CA2
- Course Totale
- Vibrations Norme AIR 7306 Titre 3
Sinusoidales Fasci. 41 tabl. 2
Aleatoires Fasci. 42 Figure 17
- Endurance Mecanique

*** Caract. ELECTRIQUES**

- Tension d'Alimentation
- Pouvoir de Coupure
En circuit resistif
En circuit selfique
- Endurance Electrique

*** GENERAL Caract.**

- Ambient Temperature range -35° ↔ +75°C
- Storage Temperature range -55° ↔ +85°C
- Front face drip.proof
(MIL STD 810D/506-2/proced.II)
Goutte a goutte / Dropwise
- Dielectric withstanding voltage 500V
- Insulation resistance >10MΩ sous 500Vcc
- Mass 25±2g
- Material Thermoplastique Inox
Thermoplast Stainless steel

*** MECANICAL Caract.**

- Operate Torque FC
1st Circuit 0.3 N.m Max
2nd Circuit 0.5 N.m Max
- Release Torque 0.06 N.m Min
- Pre Travel
1st Circuit -> CA1 12° Max
2nd Circuit -> CA2 20° Max
- Total Travel 22° min
- Vibrations Air 7306 title 3
Sinusoidal Part 41 Table 2
Random Part 42 scheme 17
- Mechanical Endurance 100 000 Cycles

*** ELECTRICAL Caract.**

- Nominal Voltage 30VDC ou 115VAC 400Hz
- Electrical Rating
Resistive circuit 6A
Inductive circuit L/R=5ms 3A
- Electrical Endurance 50 000 Cycles

83574501

Product:

| | | | | | |
|---|--|--|---------------|---|------------|
| D | CTP9489 : CORRECTION TEMPERATURE D'UTILISATION | | Modified by | F_MONCHAL | 26/04/2011 |
| | | | Verified by | L_JULLY | 26/04/2011 |
| | | | Authorized by | | |
| Toler. gene. Lin ± 0.1 mm | | <p>This document is the property of Crouzet-Automatismes. It's contents cannot be reproduced or divulged without the company's written approval. The product data and specifications found on this document do not constitute any contractual obligation. Crouzet-Automatismes and its subsidiaries reserve the right to modify the specifications. All rights of reproduction, modification, reprinting, and translation reserved for all countries</p> | | | |
| Toler. gene. Ang ± 1 degrees | | | | | |
| | | General Raw surface <input checked="" type="checkbox"/> Ro | | Scale 1/1 | |
| 2, rue du Dr ABEL BP 59, 26902, Valence CEDEX 9 France | | Customer: Designation/FR: Designation/GB: | | Customer Ref.: PFT001:x<C>;y<M> | |
| Department: CT | | Design by B_TRUCHET 02/04/1994 Verif. by C_MARTIN 02/04/1994 | | GACHETTE 2 POSITIONS GRISE UNIPOLAIRE ONE POLE TWO POSITIONS TRIGGER MOMENTARY ACTION FICHE TECHNIQUE - DATA SHEET | |
| NATO code: FA0X2 | | Authorized by | | FT83574501FR Index D Format A3 Folio 1/1 | |