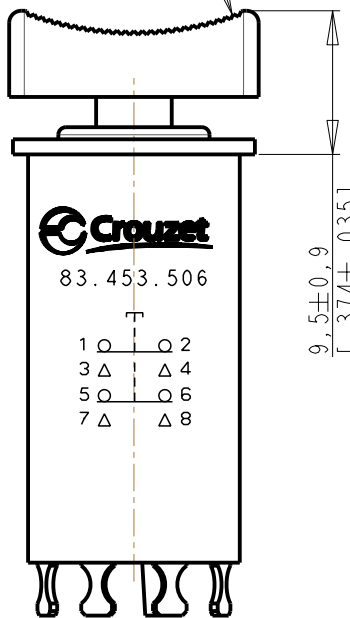
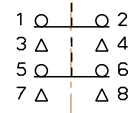


R 20
[.787]

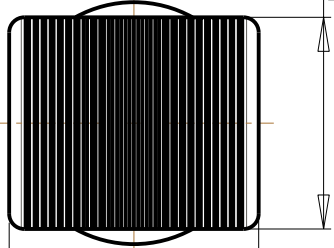


9,5±0,9
[.374±.035]

83.453.506



ECHELLE 1/1



14±0,2
[.551±.007]

16,5±0,2
[.650±.007]

ENDURANCE MECANIQUE : 50000 CYCLES
FORCE DE COMMANDE : 16N MAX.
FORCE DE RELACHEMENT : 4N MIN.

MECHANICAL ENDURANCE : 50000 CYCLES
CONTROL FORCE : 3.52Lbs max.
RELEASE FORCE : 0.88Lbs MIN.

AUTRES CARACTERISTIQUES, IDENTIQUES A : FT83.453.501 OTHER CHARACTERISTICS IDENTICAL TO : FT83.453.501

83453506
Product:

C	C.C.T.DEF.00793.FR : Modification cote suite evolution corps 79216065		Modified by	C_BODIN	10/02/2012
	9 -> 9.5		Verified by	V_CAILLET	10/02/2012
			Authorized by		

Toler. gene. lin ± mm		<p><i>This document is the property of Crouzet-Automatismes. It's contents cannot be reproduced or divulged without the company's written approval. The product data and specifications found on this document do not constitute any contractual obligation. Crouzet-Automatismes and its subsidiaries reserve the right to modify the specifications. All rights of reproduction, modification, reprinting, and translation reserved for all countries</i></p>	
Toler. gene. Ang ± degrees			
		<p>Scale 2/1</p>	

2, rue du Dr ABEL BP 59, 26902, Valence CEDEX 9 France		Customer:		Customer Ref.:	
		Designation/FR: BOUTON POUSSOIR A EFFET TACTILE BIPOLAIRE INVERSEUR Designation/GB: TACTILE-EFFECT PUSH-BUTTON TWO-POLE CHANGE-OVER			
Department: CT		Design by JL_BOURGNE 04/09/2006		DATA SHEET FT83453506FR	
NATO code: FA0X2		Verif. by J_RODRIGUEZ 04/09/2006			