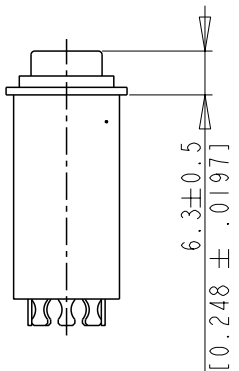


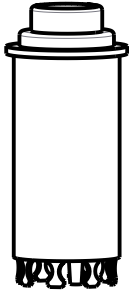
A

A



B

B



C

C

POUSSOIR ROUGE
AUTRES CARACTERISTIQUES IDENTIQUE A :
FT83453001FR

RED BUTTON
OTHER CHARACTERISTICS IDENTICAL TO :
FT83453001FR

B	C.C.T.DEF.00793.FR : Modification cote suite evolution corps 79216065		Modified by	C_BODIN	09/02/2012
	5.8 -> 6.3		Verified by	V_CAILLET	09/02/2012
			Authorized by		
Toler. gene. lin ± 0.1 mm		<p>This document is the property of Crouzet-Automatismes. Its contents cannot be reproduced or divulged without the company's written approval. The product data and specifications found on this document do not constitute any contractual obligation. Crouzet-Automatismes and its subsidiaries reserve the right to modify the specifications. All rights of reproduction, modification, reprinting, and translation reserved for all countries</p>			
Toler. gene. Ang ± 1 degrees					
D		General Raw surface Ra ✓	Scale 1/1		
		2, rue du Dr ABEL BP 59, 26902, Valence CEDEX 9 France	Customer:	Customer Ref.:	
		Designation/FR: BOUTON POUSSOIR COURTA EFFET TACTILE INVERSEUR BIPOLAIRE	PFT001:<C>;<M>		
		Designation/GB: SHORT PUSH BUTTON TACTILE EFFECT TWO-POLE CHANGE-OVER	Dispatching 01		
Department: CT	Design by R_JUNILLON 21/05/1999	DATA SHEET			Index
	Verif. by F ROUX 21/05/1999				FT83453015FR
NATO code: FA0X2	Authorized by				
					B
					A4
					1/1