

PRESENTATION

APPAREIL NON ETANCHE
BOITIER: POLYAMIDE 6.6 CHARGE DE
30% DE FIBRE DE VERRE, NOIR
SOCLE: PPO RENFORCE FIBRE DE VERRE, NOIR
BOUTON: RESINE ACETALE, ROUGE
COSSES: A SOUDER W2 EN LAITON ARGENTE
CONTACTS: ARGENT

CARACTERISTIQUE MECANIQUES

FORCE DE COMMANDE (FC) :
FORCE DE RELACHEMENT (FR) :
FORCE ADMISSIBLE EN FIN DE COURSE :
COURSE RESIDUELLE ALLER (CRA) :
COURSE DIFFERENTIELLE (CD) :
COURSE TOTALE (CT) :
COURSE RESIDUELLE RETOUR (CRR) :
ENDURANCE MECANIQUE:
VIBRATION: SELON NORME AIR 7306 TITRE 3
a) SINUSOIDALES: FASCICULE 41 TABLEAU 2
b) ALEATOIRES: FASCICULE 42 FIGURE 17

CARACTERISTIQUES ELECTRIQUES

ENDURANCE ELECTRIQUE:
* RESISTANCE DE CONTACT:
(1) ENDURANCE ELECTRIQUE:
POUR UNE CHUTE DE TENSEON DE 300mV MAX. A 2A
DIELECTRIQUE:

	CHANGE-OVER		NORMALY OPEN	
	30VDC	115VAC 400HZ	30VDC	115VAC 400HZ
CURRENT	2.5A	2.5A	3.5A	3.5A
LAMP	5A	5A	7.5A	7.5A
RESISTOR	2A	2A	2A	2A
SELF-INDUC(1)				

MINIMUM CURRENT: 0.5mA under 5VDC *

CARACTERISTIQUE GENERALES

TEMPERATURE D'EMPLOI :
TEMPERATURE DE STOCKAGE :
MASSE :

PRESENTATION

NON-WATERPROOF PUSH-BUTTON
CASING: POLYAMID 6.6 REINFORCED
WITH 30% FIBREGLASS, BLACK
BOTTOM: PPO REINFORCED FIBREGLASS, BLACK
BUTTON: ACETATE RESIN, RED
SOLDER TERMINAL LUGS W2 SILVER-PLATED BRASS
CONTACTS: SILVER

MECHANICAL PROPERTIES

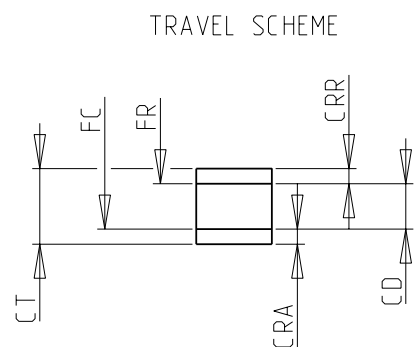
CONTROL FORCE (FC):
RELEASE FORCE (FR):
PERMISSIBLE FORCE AT END OF TRAVEL:
OVERTRAVEL (CRA):
DIFFERENTIAL TRAVEL (CD):
TOTAL TRAVEL (CT):
RETURN TRAVEL
MECHANICAL STRENGTH:
VIBRATION: IN ACCORDANCE WITH AIR 7306 TITRE 3
a) SINUSOIDAL: PRT 41 TABLE 2
b) RANDOM: PRT 42 SCHEME 17

ELECTRICAL PROPERTIES

ELECTRICAL STRENGTH:
* CONTACT RESISTANCE:
(1) ELECTRICAL STRENGTH :
FOR VOLTAGE DROP 300mV. MAX AT 2A
DIELECTRIC STRENGTH:

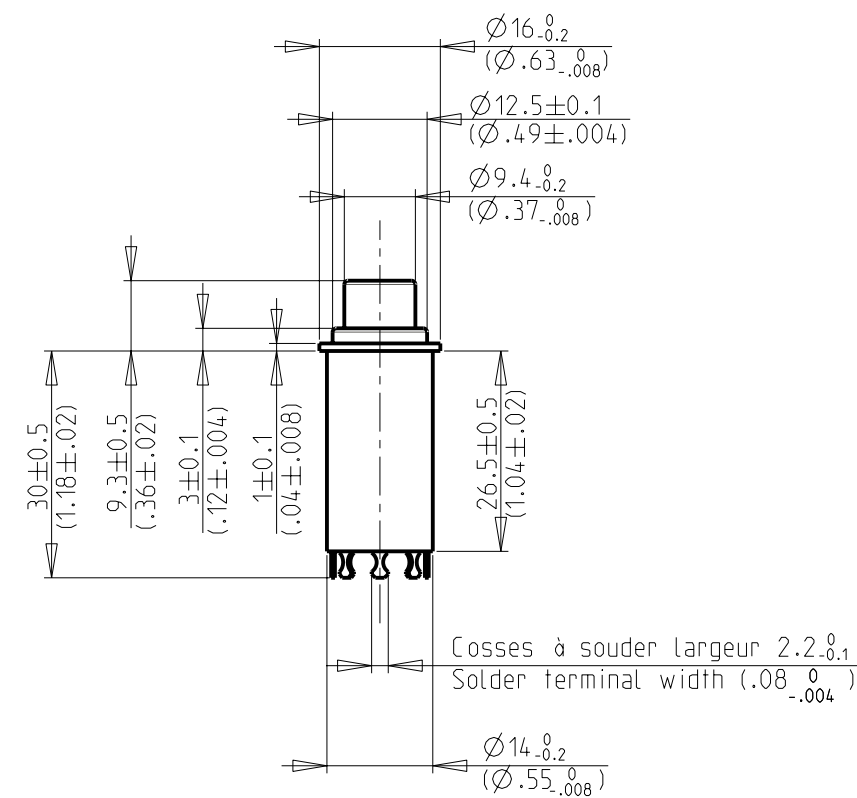
GENERAL PROPERTIES

OPERATING TEMPERATURE:
STORAGE TEMPERATURE:
MASSE:



12N MAX
3N MIN
100N
0.4mm MIN
1.4mm MAX
2.2mm ±0.4
0.4mm MIN
300 000 CYCLES

100 000 CYCLES
IN ACCORDANCE WITH MIL 8805 D
60 000 CYCLES
1200V



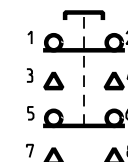
Fiche d'équipement AIR

HOMOLOGATION

6.536.103

AIR equipment sheet

Schematic diagram



Product: 83453002

F	C.C.T.DEF.00793.FR : Changement cotes suite evolution corps 79216065 27 -> 26.5 ; 2.5 -> 3 ; 8.8 -> 8.3 ; 30.5 -> 30		Modified by	C_BODIN	09/02/2012
			Verified by	V_CAILLET	09/02/2012
		Authorized by		NON APPLIC.	
Toler. gene. Lin ±		mm		This document is the property of Crouzet-Automatismes. It's contents cannot be reproduced or divulged without the company's written approval. The product data and specifications found on this document do not constitute any contractual obligation. Crouzet-Automatismes and its subsidiaries reserve the right to modify the specifications. All rights of reproduction, modification, reprinting, and translation reserved for all countries.	
Toler. gene. Ang ±		degrees			
		General Raw surface Ra ✓		Scale 1/1	
2, rue du Dr ABEL BP 59, 26902, Valence CEDEX 9 France		Customer:		Customer Ref.:	
		Designation/FR:		BOUTON POUSSOIR A EFFET TACTILE INVERSEUR BIPOLAIRE	
		Designation/GB:		TACTILE EFFECT PUSH-BUTTON TWO-POLE CHANGE OVER	
Department:		Design by L_GUILHOT 03/04/2000		PFT001:0<C>;0<M>	
CT		Verif. by M_DOREY 04/04/2000		Dispatching 01	
NATO code: FA0X2		Authorized by NON APPLIC.		Index Format Folio	
				F A3 1/1	

FT83453002FR