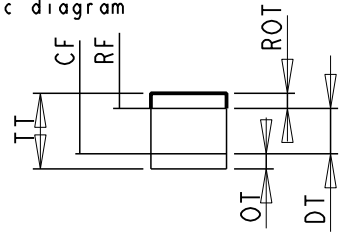
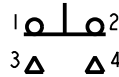


Schematic diagram



PRESENTATION

Non-Waterproof push-button
 Casing:polyamide 6.6 reinforced with 30% fibreglass black
 Bottom:PPO reinforced fibreglass black
 Button:acetate resin
 Solder terminal lugs (W2) silver-plated brass
 Contacts:silver

MECHANICAL PROPERTIES

Control force (CF) : 2.67 lbs max.(12 N max.).
 Force to reach end of travel:6.74 lbs max (30N max)
 Release force (RF) : .66 lbs min.(3 N min.).
 Permissible force at end of travel : 22.3 lbs (100 N).
 Operating temperature:-65 F to +180 F(-55° to +85°C).
 Mechanical strength : 300,000 cycles.
 Overtravel (OT) : .086 in min.(2.2 mm min.).
 Differential travel (DT) .047 in max (1.2 mm max.).
 Total travel (TT) : .15 in min.(4 mm min.).
 Return overtravel (ROT) : .0078 in min.(0.2 mm min.).
 Weight : .21 oz (0.006Kg)

VIBRATIONS

In accordance with AIR 7306 file 3
 a) Sinusoidal=part 41-table 2
 b) Randon=part 42-scheme 17

ELECTRICAL PROPERTIES

CURRENT	CHANGE-OVER		NORMALLY OPEN	
	30V dc	115V ac 400Hz	30V dc	115V ac 400Hz
LAMP	2.5A	2.5A	3.5A	3.5A
RESISTOR	5A	5A	7.5A	7.5A
SELF-INDUC(1)	2A	2A	2A	2A
MINIMUM CURRENT	0.5 mA sous 5 VDC *			

Electrical strength : 100,000 cycles.
 (1) Electrical strength : 60,000 cycles.
 For voltage drop 300mV max. at 2A
 * Contact resistance in accordance with MIL 8805 D
 Dielectric strength : 1200V

D	C.C.T.DEF.01263.FR	Modified by	C_BODIN	08/07/2013
	DT = .039 > .047in max / ROT = .015 > .0078in min / OT = .094 > .086in min	Verified by	S_MICHEL	08/07/2013
Toler. gene. lin ± mm		This document is the property of Crouzet-Automatismes. It's contents cannot be reproduced or divulged without the company's written approval. The product data and specifications found on this document do not constitute any contractual obligation. Crouzet-Automatismes and its subsidiaries reserve the right to modify the specifications. All rights of reproduction, modification, reprinting, and translation reserved for all countries.		
Toler. gene. Ang ± degrees				
	General Raw surface Ra ✓	Scale 1/1		
2 rue du Dr Abel CS 60059 26902 Valence Cedex 9 France	Customer:	Customer Ref.:		
	Designation/FR:	PUSH-BUTTON LONG RESIDUAL TRAVEL SINGLE POLE		PFT001:<C>;<M>
	Designation/GB:			Dispatching D1
Department: CT	Designed by JUNILLON 25/11/1991	DATA SHEET		Index
	Verified by 25/11/1991			Format
NATO code: FA0X2	Authorized by	FT83451001GB		D A4 1/1