

**PRESENTATION**

APPAREIL NON ETANCHE  
BOITIER: POLYAMIDE 6.6 CHARGE DE 30% DE FIBRE DE VERRE, NOIR  
SOCLE: PPO RENFORCE FIBRE DE VERRE, NOIR  
BOUTON: RESINE ACETALE, ROUGE  
COSSES: A SOUDER W2 EN LAITON ARGENTE  
CONTACTS: ARGENT

**CARACTERISTIQUE MECANIQUES**

FORCE DE COMMANDE (FC) :  
FORCE DE RELACHEMENT (FR) :  
FORCE ADMISSIBLE EN FIN DE COURSE :  
COURSE RESIDUELLE ALLER (CRA) :  
COURSE DIFFERENTIELLE (CD) :  
COURSE TOTALE (CT) :  
COURSE RESIDUELLE RETOUR (CRR) :  
ENDURANCE MECANIQUE:  
VIBRATION: SELON NORME AIR 7306 TITRE 3  
a) SINUSOIDALES: FASCICULE 41 TABLEAU 2  
b) ALEATOIRES: FASCICULE 42 FIGURE 17

**CARACTERISTIQUES ELECTRIQUES**

ENDURANCE ELECTRIQUE:  
\* RESISTANCE DE CONTACT:  
(1) ENDURANCE ELECTRIQUE:  
POUR UNE CHUTE DE TENSEON DE 300mV MAX. A 2A  
DIELECTRIQUE:

|               | CHANGE-OVER |                 | NORMALY OPEN |                 |
|---------------|-------------|-----------------|--------------|-----------------|
|               | 30VDC       | 115VAC<br>400HZ | 30VDC        | 115VAC<br>400HZ |
| CURRENT       |             |                 |              |                 |
| LAMP          | 2.5A        | 2.5A            | 3.5A         | 3.5A            |
| RESISTOR      | 5A          | 5A              | 7.5A         | 7.5A            |
| SELF-INDUC(1) | 2A          | 2A              | 2A           | 2A              |

MINIMUM CURRENT: 0.5mA under 5VDC \*

**CARACTERISTIQUE GENERALES**

TEMPERATURE D'EMPLOI :  
TEMPERATURE DE STOCKAGE :  
MASSE :

**PRESENTATION**

NON-WATERPROOF PUSH-BUTTON  
CASING: POLYAMID 6.6 REINFORCED WITH 30% FIBREGLASS, BLACK  
BOTTOM: PPO REINFORCED FIBREGLASS, BLACK  
BUTTON: ACETATE RESIN, RED  
SOLDER TERMINAL LUGS W2 SILVER-PLATED BRASS  
CONTACTS: SILVER

**MECHANICAL PROPERTIES**

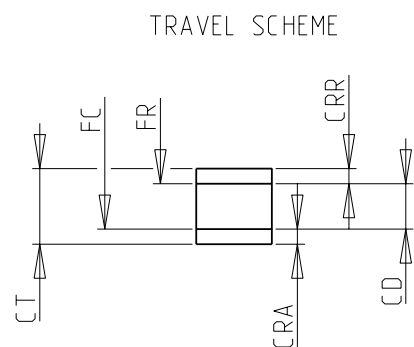
CONTROL FORCE (FC):  
RELEASE FORCE (FR):  
PERMISSIBLE FORCE AT END OF TRAVEL:  
OVERTRAVEL (CRA):  
DIFFERENTIAL TRAVEL (CD):  
TOTAL TRAVEL (CT):  
RETURN TRAVEL  
MECHANICAL STRENGTH:  
VIBRATION: IN ACCORDANCE WITH AIR 7306 TITRE 3  
a) SINUSOIDAL: PRT 41 TABLE 2  
b) RANDOM: PRT 42 SCHEME 17

**ELECTRICAL PROPERTIES**

ELECTRICAL STRENGTH:  
\* CONTACT RESISTANCE:  
(1) ELECTRICAL STRENGTH :  
FOR VOLTAGE DROP 300mV. MAX AT 2A  
DIELECTRIC STRENGTH:

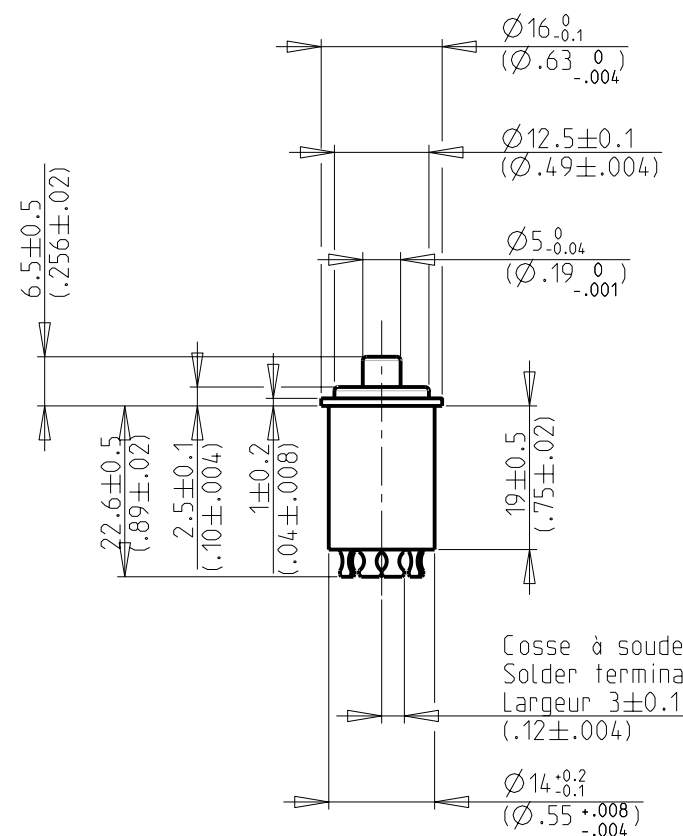
**GENERAL PROPERTIES**

OPERATING TEMPERATURE:  
STORAGE TEMPERATURE:  
MASSE:



12N MAX  
3N MIN  
100N  
0.4mm MIN  
1mm MAX  
2mm ±0.4  
0.4mm MIN  
300 000 CYCLES

100 000 CYCLES  
IN ACCORDANCE WITH MIL 8805 D  
60 000 CYCLES  
1200V



Cosse à souder  
Solder terminal  
Largeur 3±0.1  
(.12±.004)

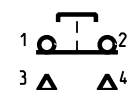
Fiche d'équipement AIR

HOMOLOGATION

6.536.100

AIR equipment sheet

Schematic diagram



Product:  
**83450502**

|   |   |  |           |                       |
|---|---|--|-----------|-----------------------|
| <b>D</b>  | Mise à jour traduction. "UNPROTECTED" devient "NON-WATERPROOF". | Modified by  | T_VINARD  | 12/04/2006            |
|   | Mise à jour du plan. CTP6433.                                   | Verified by  | F_MONCHAL | 12/04/2006            |
|   |   | Authorized by  |           |                       |
| Toler. gene. Lin ± mm   |   | This document is the property of Crouzet-Automatismes.<br>It's contents cannot be reproduced or divulged without the company's written approval.<br>The product data and specifications found on this document do not constitute any contractual obligation.<br>Crouzet-Automatismes and its subsidiaries reserve the right to modify the specifications.<br>All rights of reproduction, modification, reprinting, and translation reserved for all countries. |           |                       |
| Toler. gene. Ang ± degrees  |   |  |           |                       |
| General Raw surface Ra ✓  |   | Scale 1/1  |           |                       |
| 2, rue du Dr ABEL<br>BP 59, 26902,<br>Valence CEDEX 9<br>France                 |   | Customer:  |           | Customer Ref.:        |
| Department: CT  |   | Designation/FR: <b>BOUTON POUSSOIR A EFFET TACTILE CONTACTEUR UNIPOLAIRE</b>   |           | PFT001:0<C>;0<M>      |
| NATO code: FA0X2  |   | Designation/GB: <b>TACTILE EFFECT PUSH-BUTTON SINGLE POLE CHANGE OVER</b>  |           | Dispatching <b>01</b> |
| Design by L_GUILHOT 03/04/2000<br>Verif. by M_DOREY 04/04/2000<br>Authorized by |   | <b>FICHE TECHNIQUE - DATA SHEET</b><br><b>FT83450502FR</b>   |           |                       |
|   |   | Index  | Format    | Folio                 |
|   |   | <b>D</b>   | <b>A3</b> | 1/1                   |