

CE DOCUMENT EST LA PROPRIETE DE LA SOCIETE CROUZET. IL NE PEUT ETRE REPRODUIT OU COMMUNIQUE SANS SON AUTORISATION. LES DESCRIPTIONS ET CARACTERISTIQUES FIGURANT SUR CE DOCUMENT SONT DONNEES UNiquement A TITRE D'INFORMATION ET NON D'ENGAGEMENT CONTRACTUEL. CROUZET SE RESERVE LE DROIT D'EFFECER SANS PREAVIS, TOUTE MODIFICATION - TOUTS DROITS DE REPRODUCTION RESERVES POUR TOUTS PAYS. THIS DOCUMENT IS THE PROPERTY OF CROUZET-AUTOMATISMES. ITS CONTENTS CANNOT BE REPRODUCED OR DIVULGED WITHOUT THE COMPANY'S WRITTEN APPROVAL. THE PRODUCT DATA AND SPECIFICATIONS FOUND ON THIS DOCUMENT DO NOT CONSTITUTE ANY CONTRACTUAL OBLIGATION. CROUZET-AUTOMATISMES AND ITS SUBSIDIARIES RESERVE THE RIGHT TO MODIFY THE SPECIFICATIONS AND TRANSLATION RESERVED FOR ALL COUNTRIES.

PRESENTATION

APPAREIL ETANCHE EN FACE AVANT:
BOITIER ET POUSSOIR EN POLYAMIDE 6-6 NOIR
COSSES A SOUDER EN LAITON ARGENTE
CONTACTS: ARGENT

CARACTERISTIQUES MECANIKES DES 4 DIRECTIONS

FORCES : SUIVANT F
FORCE DE COMMANDE :
FORCE DE RELACHEMENT (FR):
FORCE ADMISSIBLE EN FIN DE COURSE:
TENUE DU POUSSOIR: A LA TRACTION:
A LA COMPRESSION:
ANGLE MESURE PAR RAPPORT A L'AXE DU POUSSOIR
COURSE D'APPROCHE (CA):
COURSE RESIDUELLE ALLER (CRA):
COURSE RESIDUELLE RETOUR (CRR):
ENDURANCE MECANIQUE PAR DIRECTION:
VIBRATION :SELON NORME AIR 7306 TITRE 3
a) SINUSOIDALES :FASCICULE 41 TABLEAU 2
b) ALEATOIRES :FASCICULE 42 FIGURE 17

CARACTERISTIQUES MECANIKES DE LA VALIDATION

FORCES : SUIVANT Z
FORCE DE COMMANDE :
FORCE DE RELACHEMENT :
FORCE ADMISSIBLE EN FIN DE COURSE:
FORCE ADMISSIBLE A LA TRACTION :
COURSE TOTALE :
COURSE D'APPROCHE A LA COMMUTATION :

ELECTRICAL CHARACTERISTICS OF 4 CIRCUITS (AXIS X ET Y)

ELECTRICAL ENDURANCE : 100000 CYCLES

VOLTAGE	30Vdc	115 Vac 400 Hz	MINIMUM
RESISTOR	2A	2A	5 Vdc *
SEL. INDUC. L/R=5m	1A	1A	
MINIMUM CURRENT	0.5mA	0.5mA	

* CONTACT RESISTANCE IN ACCORDANCE WITH MIL 8805 D

CARACTERISTIQUES GENERALES

TEMPERATURE D'EMPLOI:
TEMPERATURE DE STOCKAGE:
MASSE:

PRESENTATION

WATERPROOF FRONT FACE: MIL STD 810D-506.2 METH.2
CASING AND BUTTON POLYAMIDE 6-6 BLACK
SOLDER TERMINAL LUGS SILVER-PLATED BRASS
CONTACTS: SILVER

MECHANICALS PROPERTIES OF 4 DIRECTIONS

F (SEE FIG.)
OPERATING FORCE: 2N MINI. a 4.5N MAX.
RELEASE FORCE: 0.6N MIN. 70N MAX.
PERMISSIBLE FORCE AT END OF TRAVEL: 25N MAX. 100N MAX.
PLUNGER STRENGTHNESS: PULLING ACTION:
PUSHING ACTION:
ANGLE MEASURED FROM THE AXIS:
PRE TRAVEL (CA): 9°30' MAX.
OVERTRAVEL (CRA): 1°30' MAX.
RETURN OVERTRAVEL (CRR): 4° MIN.
MECHANICAL STRENGTH PER DIRECTION: 100 000 CYCLES
VIBRATIONS: IN ACCORDANCE WITH AIR 7306 TITRE 3
a) SINUSOIDAL=PART 41-TABLE 2
b) RANDOM=PART 42-SCHEME 17

VALIDATION MECHANICALS PROPERTIES

Z SEE FIG.
OPERATING FORCE : 12N ±3N
RELEASE FORCE : 2N MINI.
MAX. AUTHORIZED FORCE AT END OF TRAVEL: 70N MAX. 80N MAX.
PLUNGER STRENGTHNESS:PULLING ACTION:
TOTAL TRAVEL: 2mm MINI.(.078 IN.)
SWITCHING PRE TRAVEL: 1.8mm MAX.(.07 IN.)

ELECTRICAL CHARACTERISTICS OF VALIDATION CIRCUIT

ELECTRICAL ENDURANCE : 50000 CYCLES

VOLTAGE	30Vdc	115 Vac 400 Hz	MINIMUM
RESISTOR	0.5A	0.5A	5 Vdc *
MINIMUM CURRENT	0.5mA	0.5mA	
CURRENT			

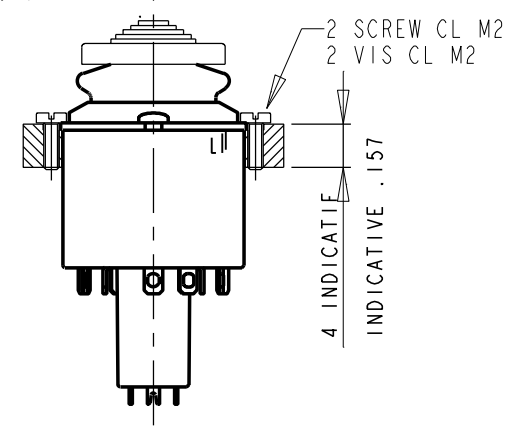
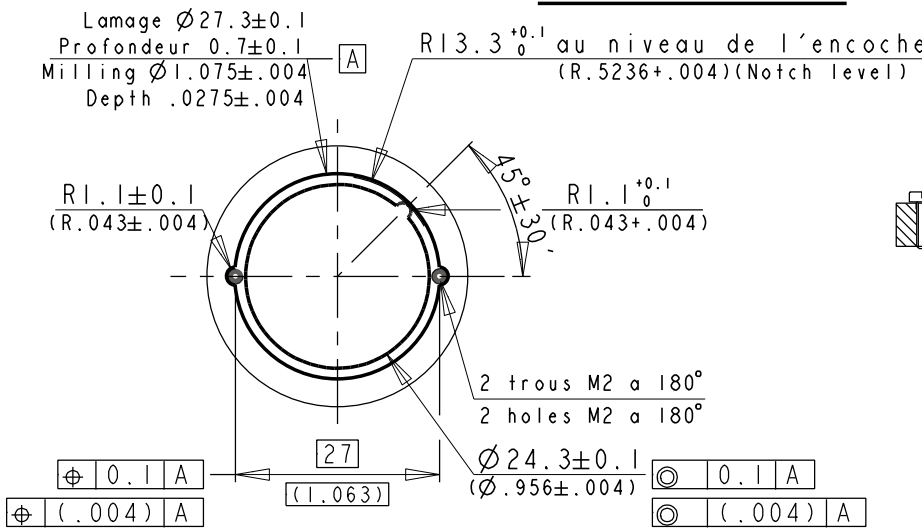
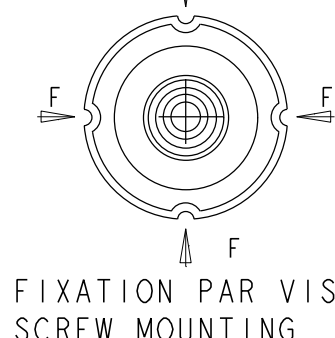
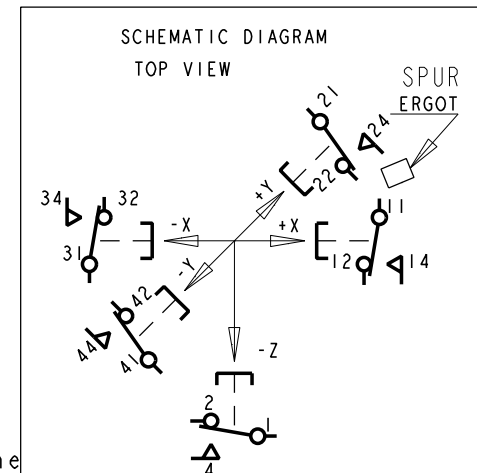
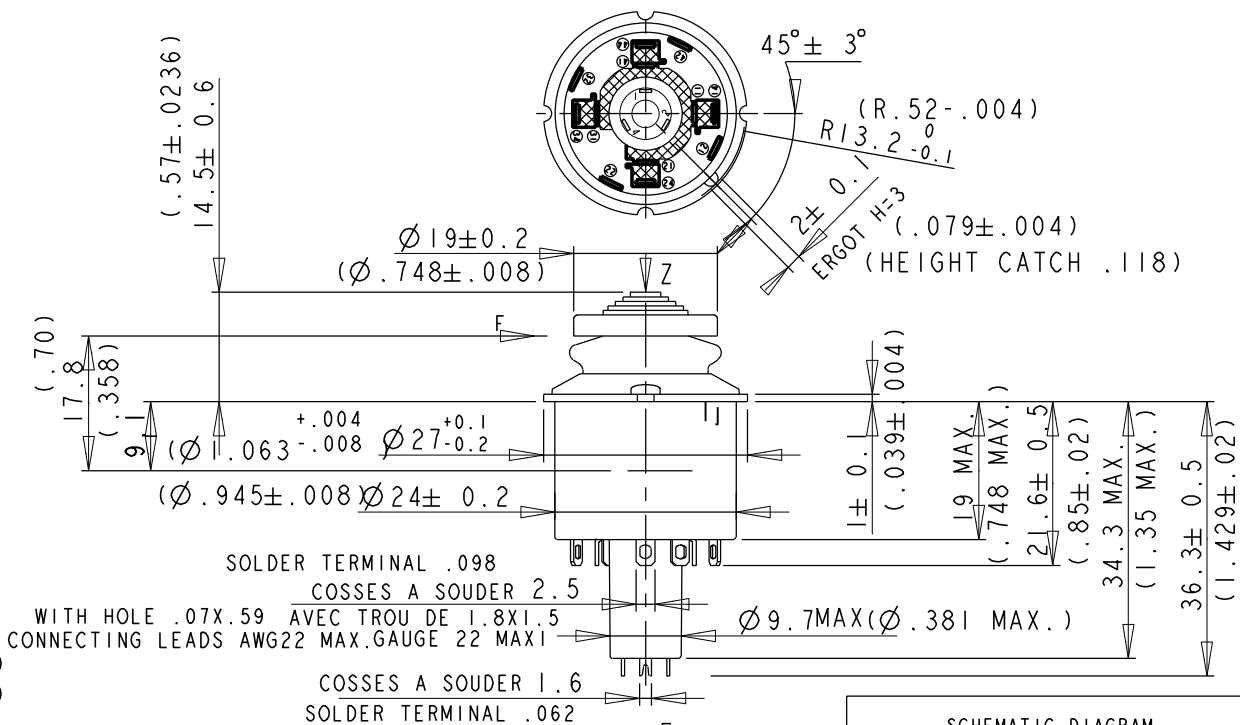
GENERAL PROPERTIE

OPERATING TEMPERATURE: -30°C A +75°C
STORAGE TEMPERATURE: -55°C A +85°C
MASSE: 0.00735Kg ±5%

FICHE TECHNIQUE DATA SHEET

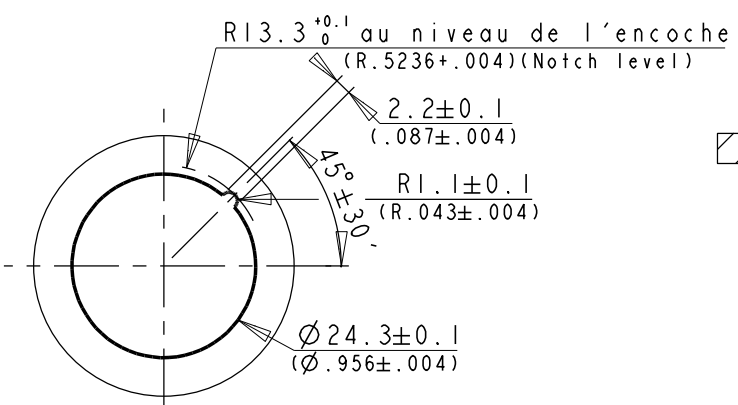
CROUZET Type : 83-452-717

TRIM TACTILE A VALIDATION CENTRALE
POUSSOIR SAPIN LIBRE EN ROTATION
FOUR WAY BUTTON WITH TACTILE EFFECT
+PUSH BUTTON - CHANGE OVER

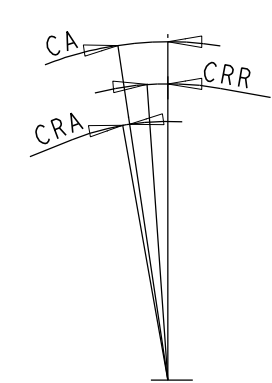


FIXATION PAR COLLAGE ASSEMBLING BY GLUE

USINAGE PLATINE PLATE MACHINING



SCHEMA DES COURSES TRAVEL SCHEME



Div:
Dep:

A	CTP 6051 : MODIF DIVERSES D'ORTHOGRAPHE ET DE TRADUCTION	JLB 9 MAI 2005	B	CTP 9134 : MISE EN CONFORMITE REPRESENTATION COSSES MINI	JLB 10 SEP 08
Etabli par Design by		GUILHOT	03-2000	CODE ENTREPRISE : NATO CODE : FA0X2	
Verifie par Approved by		DOREY	03-2000	ECHELLE SCALE	
Visa qualite Visa quality				CODE	ft: A3
FT83452717					B