

PRESENTATION

APPAREIL NON ETANCHE
BOITIER ET POUSSOIR EN POLYAMIDE 6-6 NOIR
COSSES A SOUDER W2 EN LAITON ARGENTE
CONTACTS: ARGENT

**CARACTERISTIQUES MECANIKES
DES 4 DIRECTIONS**

FORCES : SUIVANT F

FORCE DE COMMANDE:
FORCE DE RELACHEMENT (FR):
FORCE ADMISSIBLE EN FIN DE COURSE:
TENUE DU POUSSOIR: A LA TRACTION:
A LA COMPRESSION:

ANGLE MESURE PAR RAPPORT A L'AXE DU POUSSOIR
COURSE D'APPROCHE (CA):
COURSE RESIDUELLE ALLER (CRA):
COURSE RESIDUELLE RETOUR (CRR):
ENDURANCE MECANIQUE PAR DIRECTION:
VIBRATION :SELON NORME AIR 7306 TITRE 3
a) SINUSOIDALES :FASCICULE 41 TABLEAU 2
b) ALEATOIRES :FASCICULE 42 FIGURE 17

ELECTRICAL CHARACTERISTICS

ELECTRICAL ENDURANCE : 100000 CYCLES

VOLTAGE	30Vdc	115 Vac 400 Hz	MINIMUM
RESISTOR	2A	2A	5 Vdc
SEL.INDUC.L/R=5ms	1A	1A	
MINIMUM CURRENT	0.5mA	0.5mA	.

• CONTACT RESISTANCE IN ACCORDANCE WITH MIL 8805 D

CARACTERISTIQUES GENERALES

TEMPERATURE D'EMPLOI:
TEMPERATURE DE STOCKAGE:
MASSE:

PRESENTATION

NON-PROOF BUTTON
CASING AND BUTTON POLYAMIDE 6-6 BLACK
SOLDER TERMINAL LUGS W2 SILVER-PLATED BRASS
CONTACTS: SILVER

**MECHANICAL PROPERTIES
OF 4 DIRECTIONS**

F (SEE FIG.)

OPERATING FORCE: 3.5N±1.2N
RELEASE FORCE: 0.6N MIN.
PERMISSIBLE FORCE AT END OF TRAVEL: 70N MAX.
PLUNGER STRENGTHNESS: PULLING ACTION: 25N MAX.
PUSHING ACTION: 100N MAX.

ANGLE MEASURED FROM THE AXIS:
PRE TRAVEL (CA): 9°30' MAX.
OVERTRAVEL (CRA): 1°30' MIN.
RETURN OVERTRAVEL (CRR): 4° MIN.
MECHANICAL STRENGTH PER DIRECTION:
VIBRATIONS: IN ACCORDANCE WITH AIR 7306 TITRE 3
a) SINUSOIDAL=PART 41-TABLE 2
b) RANDOM=PART 42-SCHEME 17

GENERAL PROPERTIES

OPERATING TEMPERATURE: -55°C A +85°C
STORAGE TEMPERATURE: -55°C A +85°C
MASSE: 0.00735Kg ±5%

HOMOLOGATION

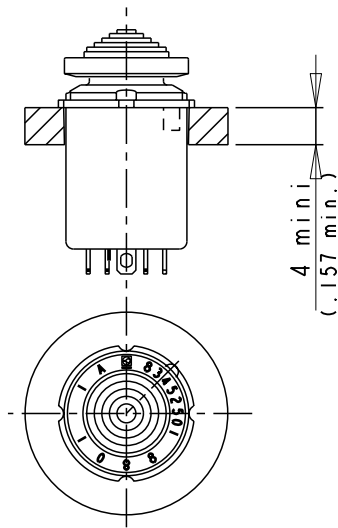
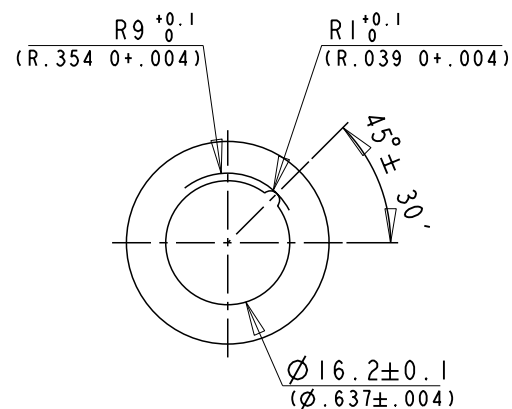
Fiche d'équipement AIR

6.536.120

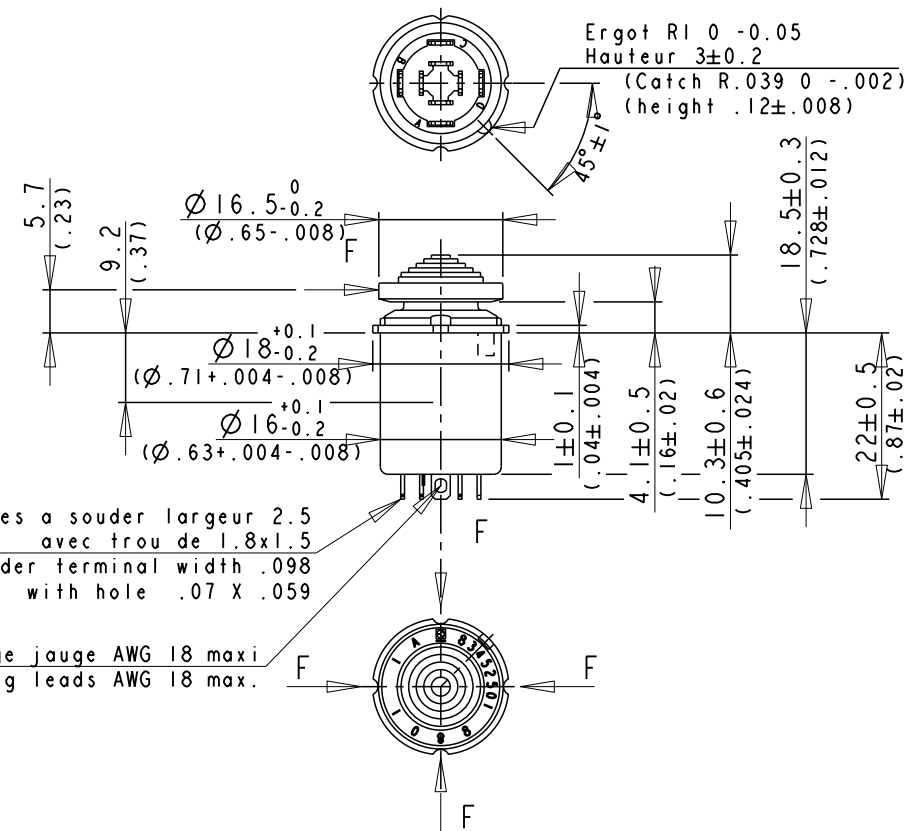
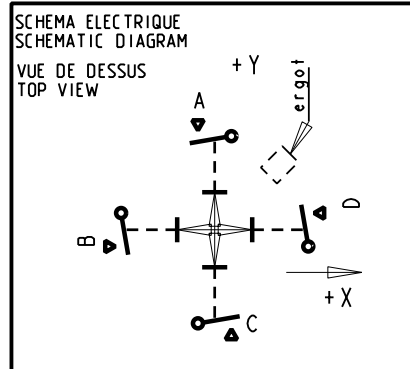
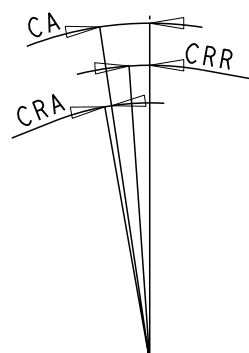
AIR equipment sheet

**FIXATION DU TRIM PAR COLLAGE
ASSEMBLING BY GLUE**

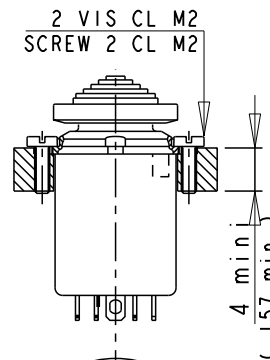
**USINAGE PLATINE
PLATE MACHINING**



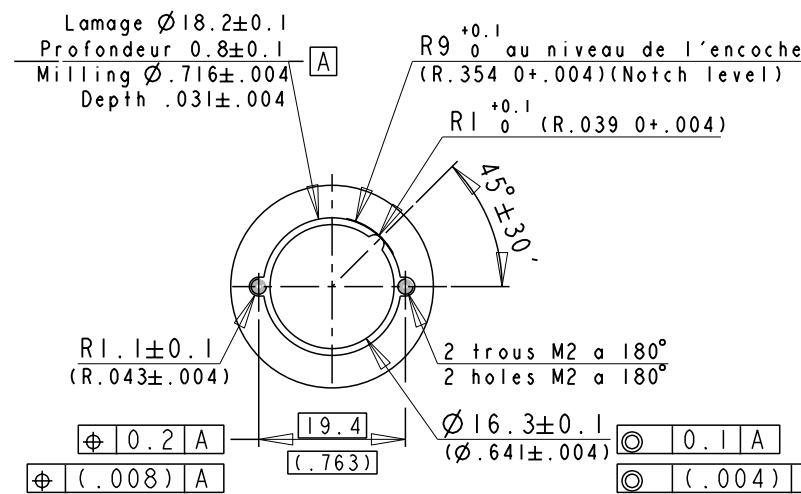
TRAVEL SCHEME



**FIXATION DU TRIM PAR VIS
SCREW MOUNTING**



**USINAGE PLATINE
PLATE MACHINING**



83452501

Product:

C	CTP 9370: Substitute schematic diagram	Modified by D_DELIAUD	21/04/2010
		Verified by F_MATTANA	21/04/2010
		Authorized by	
Toler. gene. lin ± mm		This document is the property of Crouzet-Automatismes. It's contents cannot be reproduced or divulged without the company's written approval. The product data and specifications found on this document do not constitute any contractual obligation. Crouzet-Automatismes and its subsidiaries reserve the right to modify the specifications. All rights of reproduction, modification, reprinting, and translation reserved for all countries.	
Toler. gene. Ang ± degrees			
Crouzet General Raw surface Ra ✓		Scale 1/1	
2, rue du Dr ABEL BP 59, 26902, Valence CEDEX 9 France		Customer Ref.:	
Customer:		83.452501 BOUTON 4 DIRECTIONS A EFFET TACTILE CONTACTEUR	
Designation/FR:		FOUR WAYS BUTTON WITH TACTILE EFFECT NORMALLY OPEN	
Designation/GB:		PFT001:<C>;<M>	
Department:		Dispatching 01	
CT		Index Format Folio	
NATO code: FA0X2		C A3 1/1	
Authorized by		DATA SHEET	
		FT83452501FR	